

# A SUCCESS STORY



---

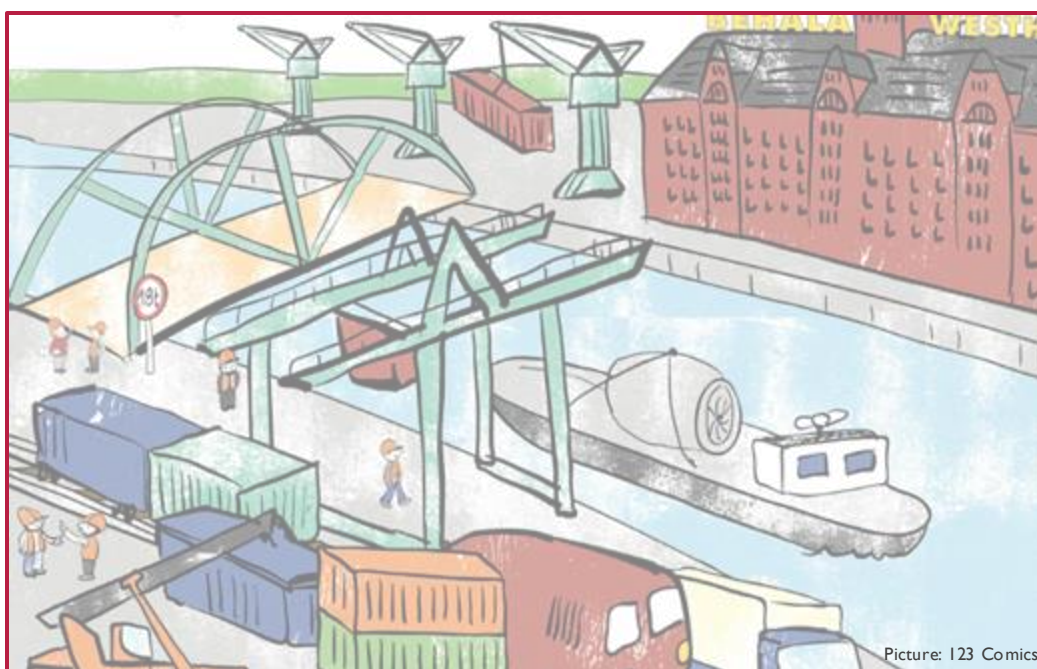
Before you begin: a few encouraging impressions

Phase  
IPhase  
IIPhase  
III

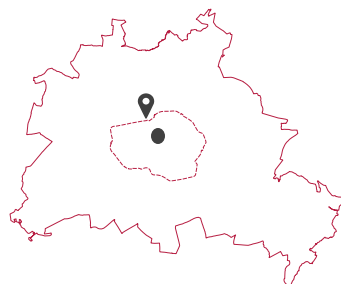
# WESTHAFEN

## BERLIN

**Overview:** The Westhafen in Berlin is a successful example of the revitalisation of transport areas in favour of sustainable city logistics.



Located directly on the border of the inner city of Berlin. Only 3 km as the crow flies to the government district and Brandenburg Gate ●



It is the largest port in Berlin and covers an area of 43 ha.



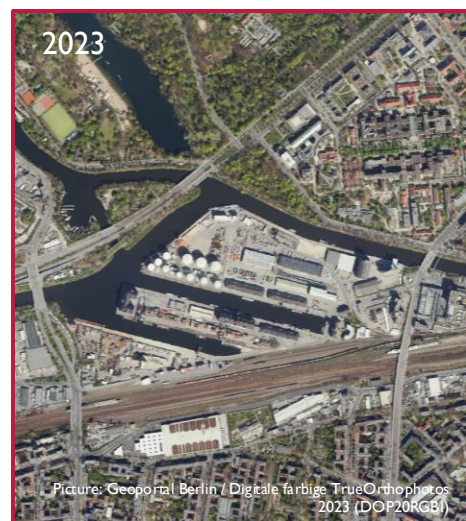
The Westhafen is an important hub for freight transport.



# WESTHAFEN

## BERLIN

**History:** The Westhafen was opened in 1923 and has been a central transshipment centre for inland shipping ever since. It was of great importance for Berlin's economic development and has undergone various modernisations and expansions over the years.



### 1923

In the course of Berlin's industrialisation, the Westhafen opened in 1923. It is connected to the Spree and Havel rivers via canals.



### 1950

The Westhafen was rebuilt after the Second World War, as 60% of the harbour facilities had been destroyed. The damage was repaired by 1950 and the harbour was further expanded.



### 2001

In 2001, one of the original three harbour basins was filled in to make room for freight forwarding buildings. **The harbour was given a container loading station** and other facilities as part of the Berlin harbour concept of 2001.



Phase  
I

Phase  
II

Phase  
III



# WESTHAFEN

## BERLIN

**Today:** Berliner Hafen- und Lagerhausgesellschaft mbH (BEHALA) operates the Westhafen. The port plays an important role in rail freight transport, with container train connections and a weekday container connection to various terminals.



Trimodal hub  
with rail connection



Number of loading  
tracks: 2x350m

Total length of the  
loading tracks: 700 m



“In order to be able to **master any logistics challenge**, BEHALA offers regional rail transport with its own locomotives, rail operator and rail infrastructure company.” (BEHALA)



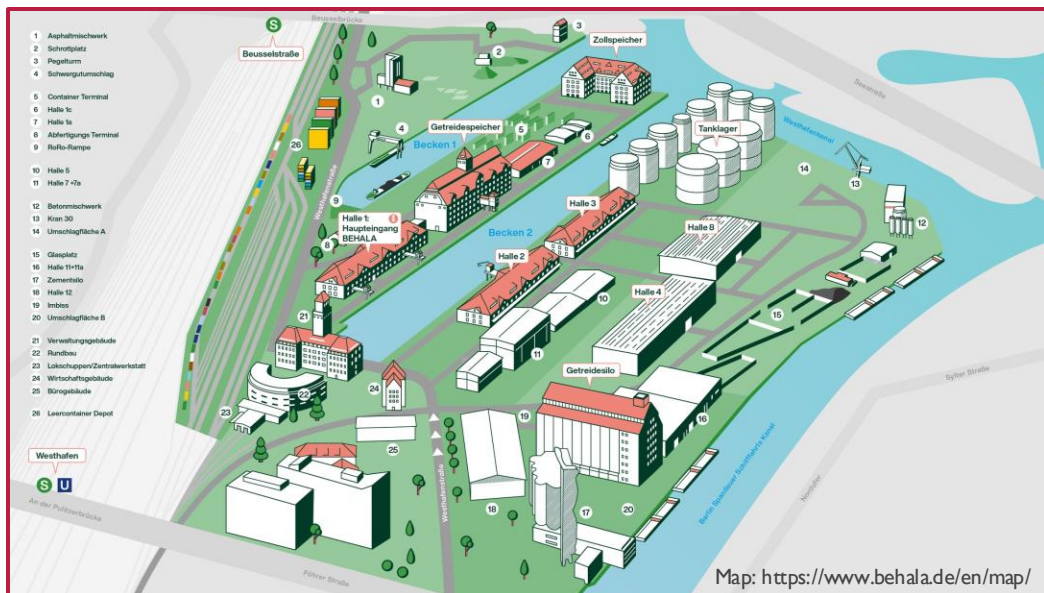
Every day, container block trains from North Rhine-Westphalia and port hinterland traffic from Hamburg/Bremerhaven arrive at Westhafen: **total throughput in 2022 was almost 140,000 TEU.**



Some of the **historic warehouses** are used for various purposes, including sales rooms, furniture storage and workshops. The Prussian Cultural Heritage Foundation uses most of the old granary, which has been converted into a warehouse.

# WESTHAFEN BERLIN

**Details:** Further information is available in other places.



Operator:  
<https://www.behala.de/en/>

Responsible Senate Department:  
<https://www.berlin.de/sen/web/en/>

Terminal information:  
[https://www.intermodal-map.com/index\\_en.html](https://www.intermodal-map.com/index_en.html)

Industrial history:  
<https://industriekultur.berlin/ort/westhafen/>

